

174000 MILLION MW
OF SOLAR ENERGY
EVERY DAY!...
LETS USE IT MAXIMUM

SURYA  Renewables

SURYA's CORE COMPETANCE

- Highest Quality Standards
- Variety of Solutions
- Vast Technical Experience
- After Sales Support
- Profound Market Knowledge
- Tie up with Leading Brands
- Registered with MNRE/MSEDCL on National Rooftop Solar Portal.

OUR MISSION

"To unlock the potential of nature to bridge the gap in energy sector and thus improve the quality of life and "Creating Better Environment". We will continually improve our products & services. And we will keep on top of today's and tomorrow's technology to ensure our customers always have best solar energy solutions available to them."

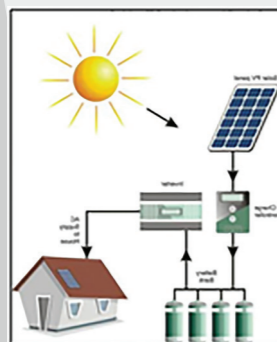
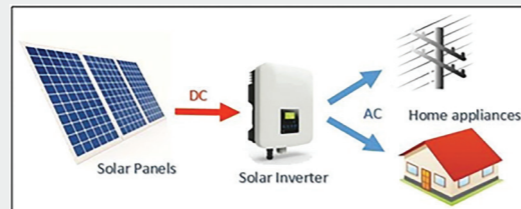
Vivek Sutar - CEO

PRODUCT RANGE

- SURYA On Grid Solar Photovoltaic Power Plants.
- SURYA Off Grid Solar Photovoltaic Power Plants.
- SURYA HYBRID Solar Photovoltaic Power Plants.

ON GRID :

In grid connected rooftop or small solar photovoltaic (SPV) system, the DC power generated from solar panel is converted to AC power using power conditioning unit/Inverter and is fed to the grid.

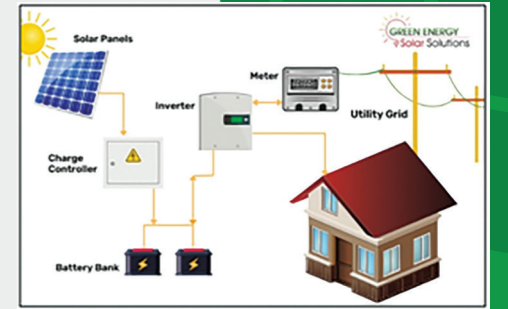


OFF GRID :

An off-grid solar system is a solar panel system that generates electricity, stores that power in solar batteries, and runs independently from the power grid. These systems encourage off-the-grid living, a lifestyle centered around energy independence and self-sustainability.

SOLAR HYBRID :

A solar hybrid system is a renewable energy system that uses solar photovoltaic (PV) panels to generate clean energy to power your home. A hybrid solar system intelligently switches between using solar power, battery storage and grid power. It allows you to avoid using grid power at peak prices leading to bill savings.



WHAT SURYA CAN DO FOR YOU?

1. Designing & Planning,
2. Preparation of Technical Drawings
3. Documentation, Site Selection & Fabrication of Suitable Mounting Frames
4. Regulatory Approvals from MSEDCL for Net Metering as well as SUBSIDY
5. Project Structuring & Installation
6. Project Management & Commissioning.
7. Installation of Solar Net Meters
8. Organizing the SUBSIDY and supporting till its get credited in clients Account.
9. Documentation Related with NET Metering Benefits.
10. Operation & Maintenance with AMC.

MNRE REVISED SOLAR SUBSIDIES NATIONAL SOLAR ROOFTOP PORTAL

Project Size	Updated Subsidy From 05.01.2024
1 KW	Rs.18000.00
2 KW	Rs.36000.00
3 KW	Rs.54000.00
4 KW	Rs.63000.00
5 KW	Rs.72000.00
6 KW	Rs.81000.00
7 KW	Rs.90000.00
8 KW	Rs.99000.00
9 KW	Rs.108000.00
10 KW	Rs.117000.00

CLIENTELE

- CG Lifestyle India Pvt Ltd (CLai World) Ambegaon, Tilak Road, Bajirao Raod, Sangli & Latur
- Lalwani Vastu Co-Op Hsg Society • Sonigara Kesar Co-Op. Hsg. Society • Ashayog Apartments
- Vandan Sweets • Vandan Enterprises • Hotel Vrindavan • Maharashtra Energy Development Agency MEDA, Pune & Kolhapur • Shivshankar Bazar, Akluj • Mukund Kulkari, Pune
- Hindustan Petroleum • Shitole Petroleum • Prajakta Petroleum • C. A. Alias Dada Gujar
- Nanasahab Suryavanshi, Baramati • Dr. Suravanshi Hospital, Akluj • BSDT, Wagholi
- Hotel Aarti Executive • Panchayat Samiti Haveli, Khed & Indapur • Panchayat Samiti, Khed
- Panchayat Samiti, kagal, Bhudargad, Chandgad, Radhanagari & Gaganbawada • Jitendra Bhuruk
- Sandeep Panchwatkar • Swastik Engineers • Saraswati Hostel • College of Arts, Science & Commerce, Bhor • Era Education Society, Pune • Samarth Engineers • Kesar Foods
- Karan Paradise Co op Society • Hotel Arman • Jama Masjid, Akluj • Mr. Prakash Malekar
- Shree Metals, Phaltan • Phoenix Hospital, Dombivili • Lambadar Society • Prabha Marathe Kalachya

PROJECTS



SURYA  Renewables

Shop No 5 & 6, Akash Kiran Phase 1, Shivdutta Nagar, Pimple Gurav,
Pune 411 061, Maharashtra (India)

Web : www.suryarenewables.com | **Email :** suryarenewables@gmail.com

Phone : 9850444185/ 9881001081 / 9175064185